

Algebra 2 Crossword Puzzle

Across

3. Negative infinity, positive infinity

5. The point where the graph intersects the y-axis

8. What is the first thing you need to find in this equation?
 $2x+10x-8=26$

$$2x+10x-8=26$$

10. The part of mathematics in which letter and other general symbols are used to represent numbers and quantities in formulas and equations

11. A number that produces a specified quantity when multiplied by itself

12. Shape defines by a quadratic equation

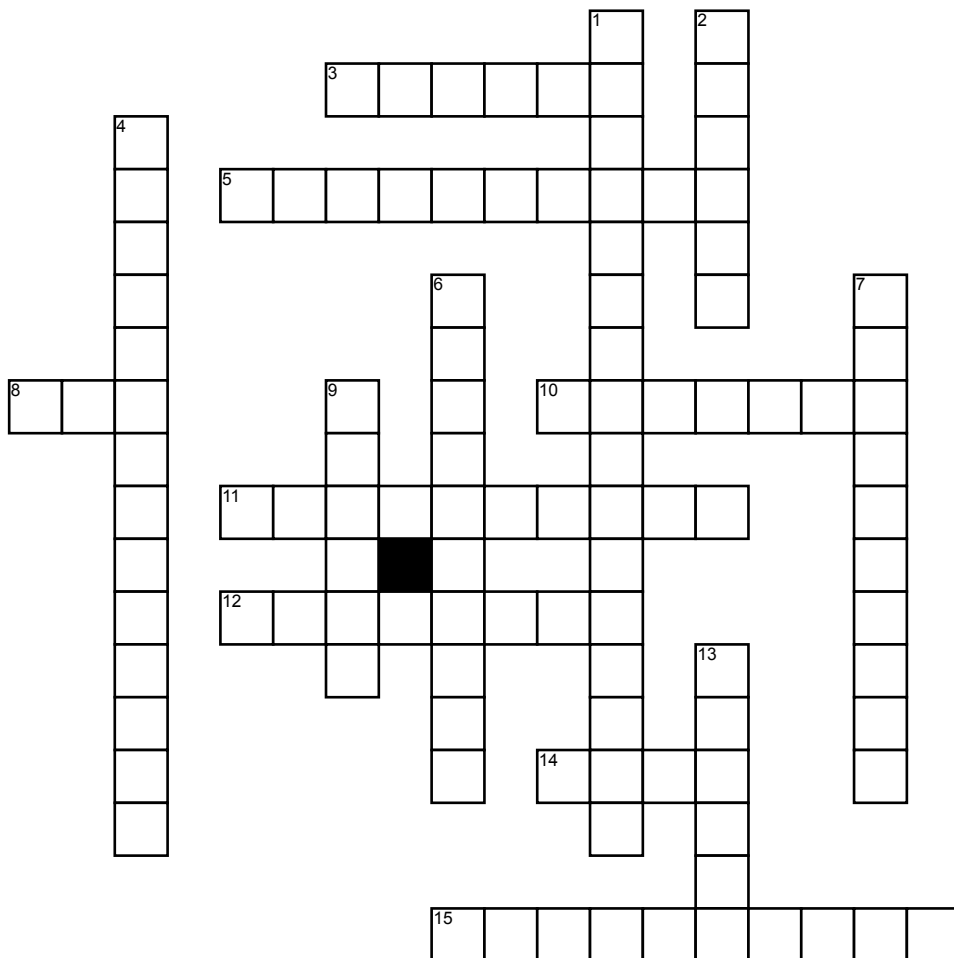
14. There are _____ terms in the imaginary pattern

15. What form is this?
 $y=a(x-h)+k$

Down

1. Set of numbers which contains all numbers less than 0 and also all numbers greater than 2

2. What do you do first?



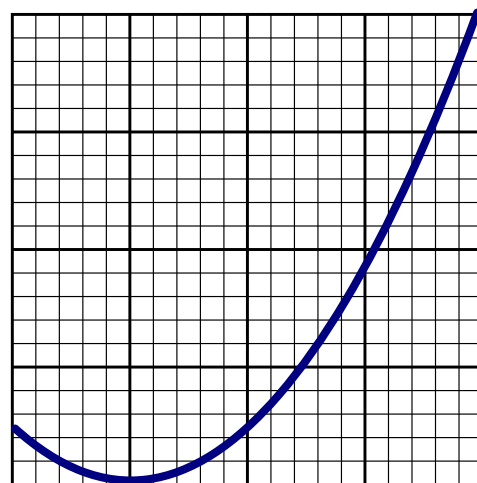
4. You use this formula to find this.. $x = -b/2a$

6. What do you do first to this equation?
 $(5+7i)+2(-2+6i)$

7. What comes first the real number or imaginary number

9. What do you have to do to get rid of the square root?

13. What does the point represent?



$$y = ax^2 + bx + c$$