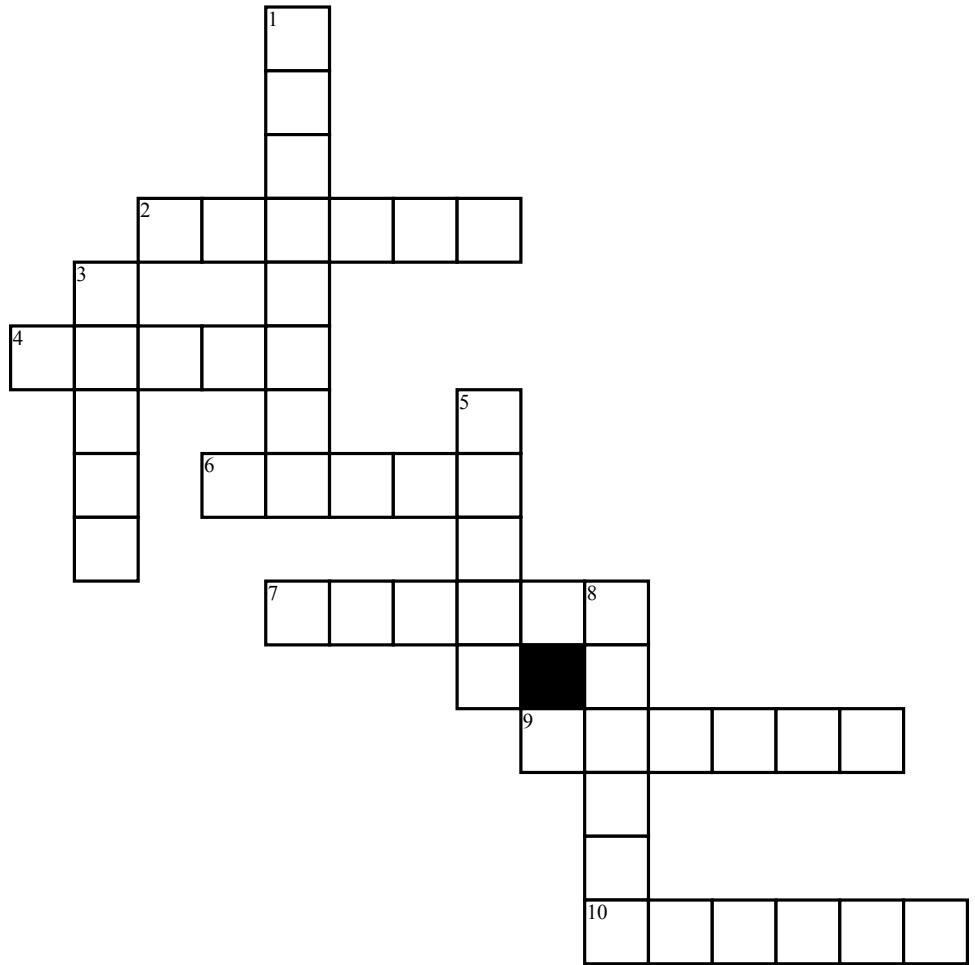
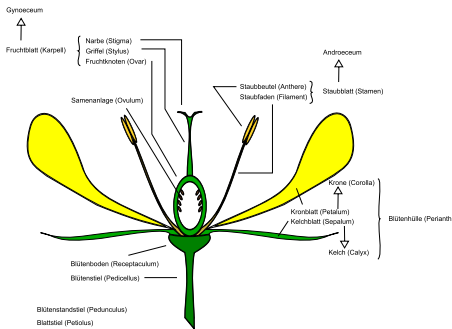


Name: \_\_\_\_\_

# Flower Anatomy



## Across

- 2. Male part of the flower.
- 4. Contains the embryo sac.
- 6. Connects the Stigma to the Ovary.
- 7. Attracts insects.
- 9. Female part of the flower.
- 10. Produces pollen.

## Down

- 1. Holds up the Anther.
- 3. Stores the Ovule.
- 5. Protects the flower.
- 8. Catches pollen.