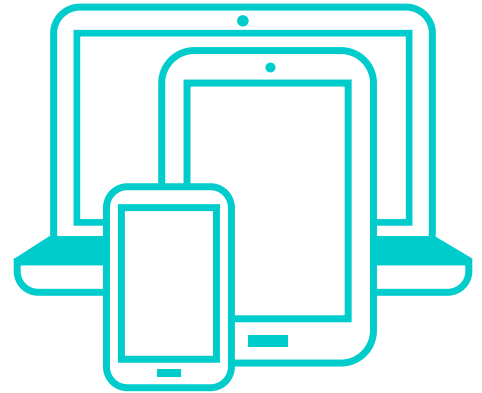
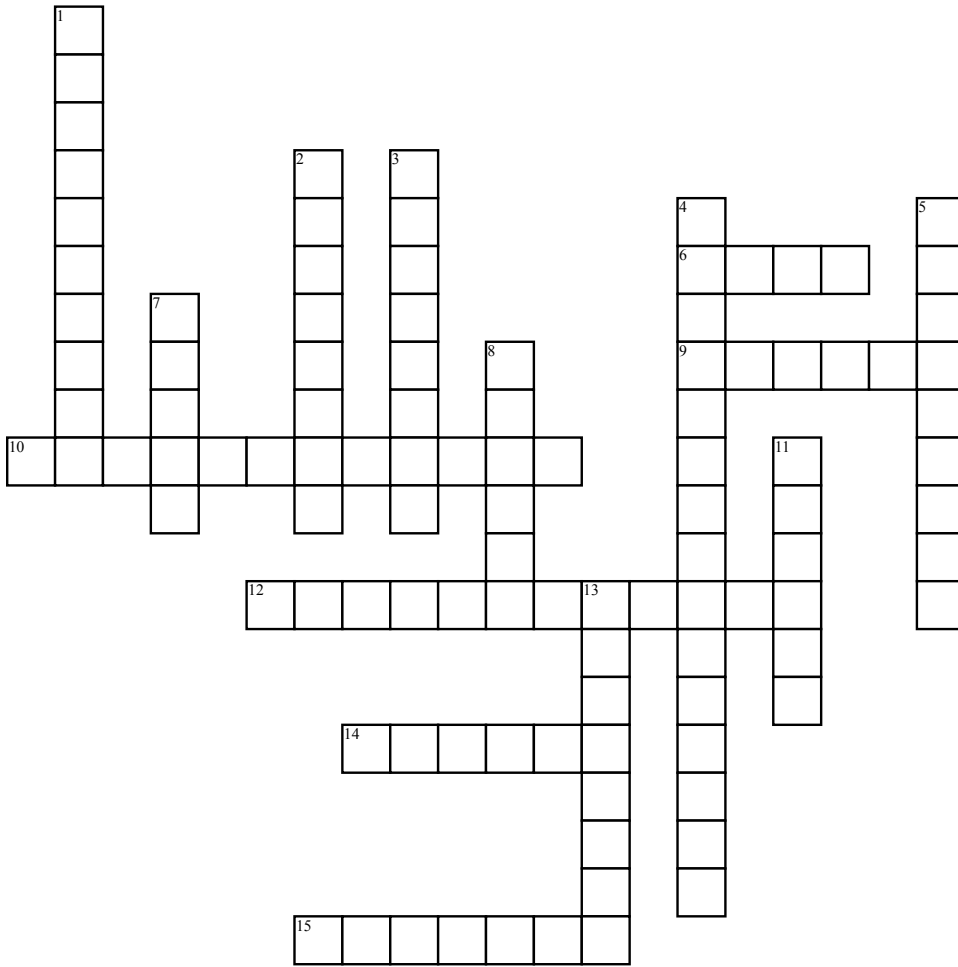


Literary Devices



Across

6. A long narrative poem about someone who does heroic deeds. Ex: The Odyssey

9. The use of humor, irony exaggeration or ridicule to expose and criticize peoples stupidity or vices. Ex: Animal Farm

10. Words that imitate sound.

12. Repetition of a beginning sound for effect.

14. Comparing two unlike things using 'like' or 'as'

15. Mental Picture created by the way the author writes

Down

1. Repeats same word or phrase to make idea more clear

2. Phrase or word stating one unlike thing is another

3. Reference to a well known character or event from history, literature etc.

4. Giving human qualities to inanimate objects.

5. Extreme Exaggeration.

7. Correspondence of sound between the words or the endings of words especially when these are at the ends of lines of poetry.

8. Phrase so overused it lost its original meaning.

11. A group of lines forming the basic reassuring metrical unit in a poem; a verse,

13. Story poem or picture that can be interpreted to reveal a hidden meaning, typically a moral or political one. Ex: Animal Farm