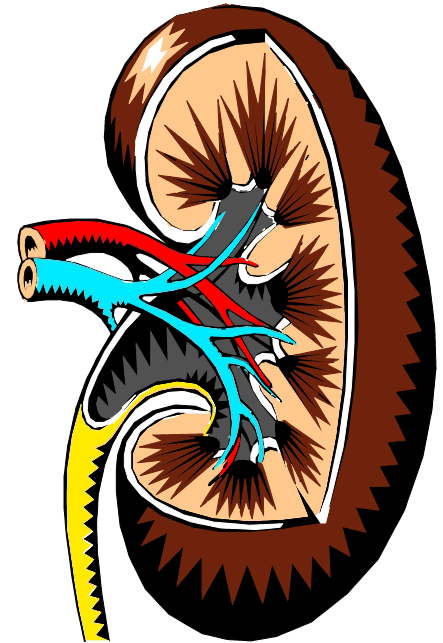
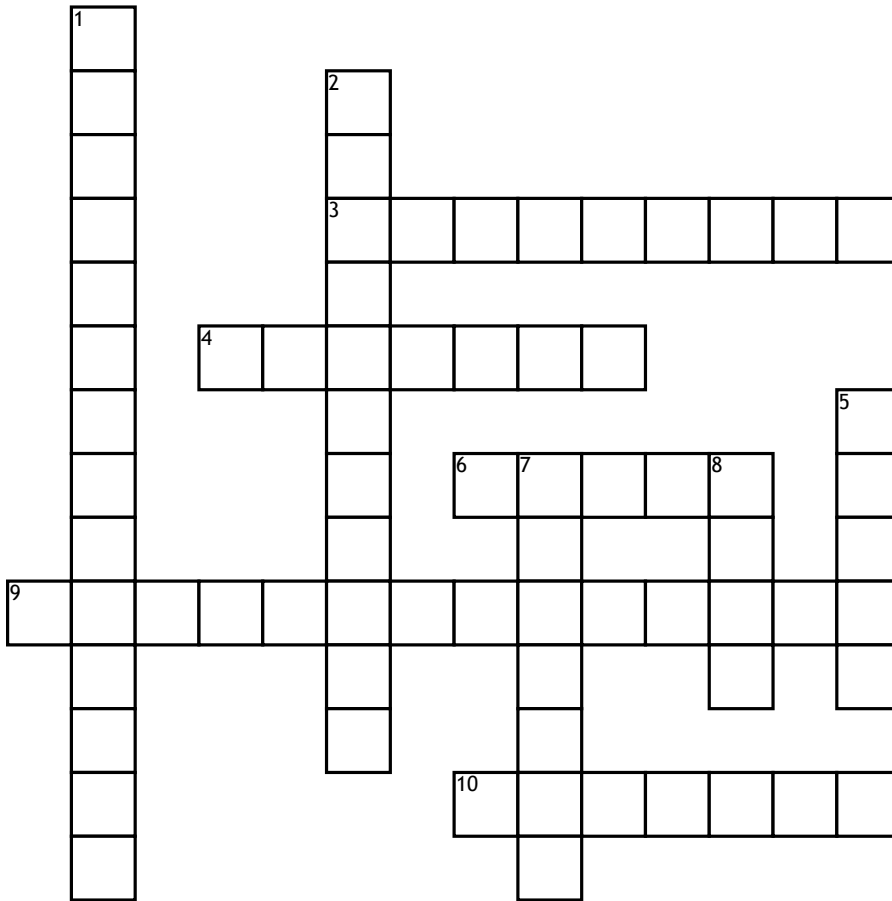


# The Excretory System



## Across

3. Clue: You lose water when you go to the bathroom, sweat, and breathe.
4. Organ in the excretory system that filters waste from the blood
6. Pair of organs where carbon dioxide and oxygen are exchanged
9. Storage organ for the excretory products
10. A tube that passes urine from the kidney to the urinary bladder

## Down

1. A saclike structure that stores urine until it can be released
2. Clue: Little or no urine, or urine that is darker than usual
5. Organ that breaks down toxins and wastes, and has many other functions
7. A tube that passes urine from the bladder to outside of body
8. The thin layer of tissue forming the natural outer covering of the body