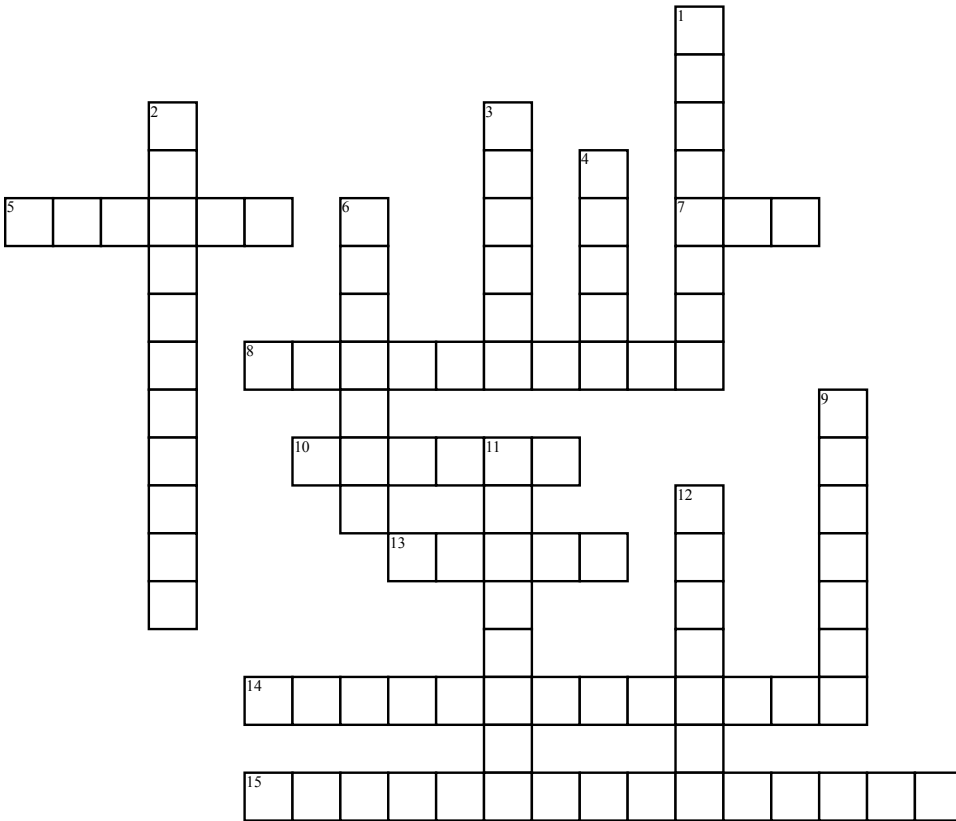
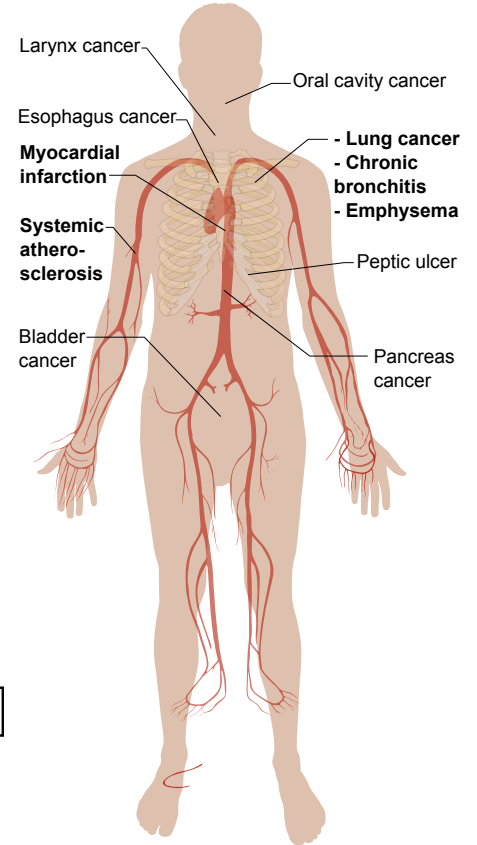


# The Lymphatic System



Common adverse effects of  
**Tobacco smoking**



## Across

- 5.** The \_\_\_ stores immature lymphocytes.
- 7.** Lymph flows in \_\_\_ direction towards the neck, unlike the constant looping of blood.
- 8.** \_\_\_ can be found throughout the body, deep inside or near the surface.
- 10.** The thymus donates mature \_\_\_ to other parts of the body in need.
- 13.** A fluid containing white blood cells that fight infections.

**14.** \_\_\_ typically treat diseases and disorders of the lymphatic system.

**15.** A network of tissues that helps rid the body of toxins, waste, and other unwanted materials.

## Down

- 1.** \_\_\_ are clusters of lymphatic tissue that can be found in the back of the nose.
- 2.** A name for white blood cells.
- 3.** The largest lymphatic organ.

**4.** The spleen acts as a \_\_\_ filter.

**6.** The spleen is located on the left side of the body above the \_\_\_.

**9.** The thymus \_\_\_ as people grow older and mature.

**11.** \_\_\_ is a cancer of lymph nodes.

**12.** Large slumps of lymphatic cells, and are the body's first line of defense in the immune system.